



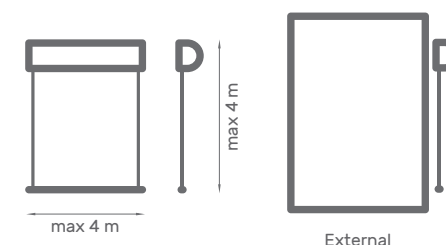
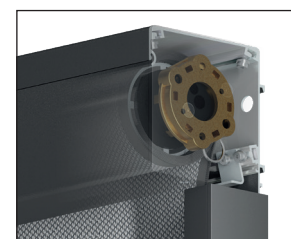
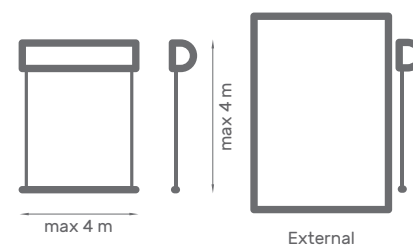
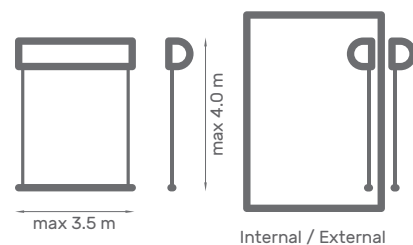
Refleksol R 95



Refleksol ZiiiP BOX



Refleksol ZiiiP 120



Properties:

- Under plaster cassette available equipped with an optional extension enabling external plaster application and optional insulation of the lintel (ZiiiP BOX System only)
- The highest wind resistance class (ZiiiP BOX System only)
- Two-piece guide rail with compensating gaskets (ZiiiP BOX System only)
- ZiiiP mechanism (ZiiiP BOX System only)
- Extruded aluminium cassette dedicated for the niche and facade installation
- Extruded aluminium sideguides
- Electric drive with wired or remote control operation
- Wide range of fabrics
- Construction available in any colour from RAL palette

Properties:

- Extruded aluminium cassette dedicated for niche or facade installation
- Under plaster cassette option available. Equipped with an extension enabling external plaster application
- The highest wind resistance class
- Two-piece guide rail with compensating gaskets
- ZiiiP mechanism
- Self-supporting system
- Electric drive with wired or remote control operation
- Wide range of fabrics
- Construction available in any colour from RAL palette

Refleksol
R 103



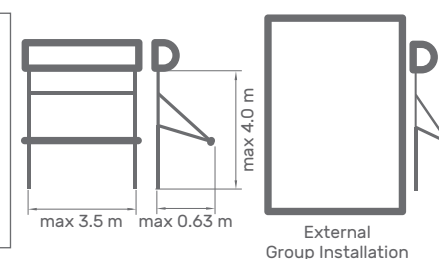
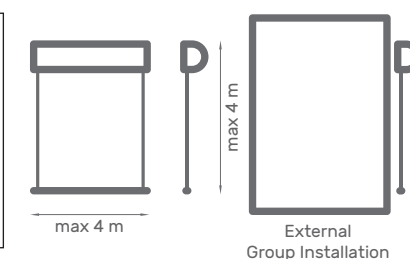
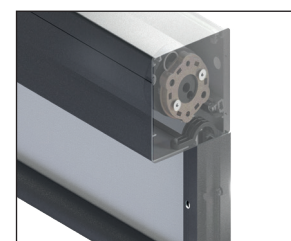
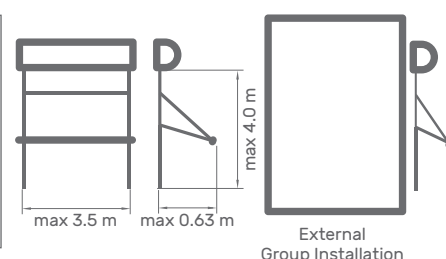
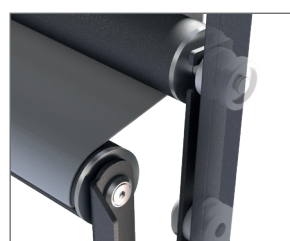
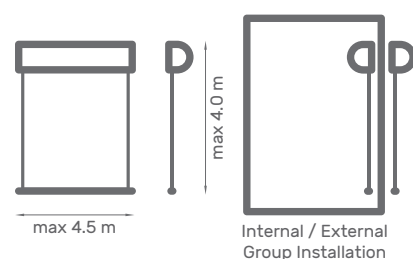
Markisolette
MR103



Refleksol
R120



Markisolette
MR120



Properties:

- Extruded aluminium cassette dedicated for wall, niche or facade installation
- Extruded aluminium sideguides
- Optional stainless steel cable guides (R103 System only)
- Option to use the ANTIWIND bar (R103 System only)
- Special arm working in the angle between 90°-135° (MR103 System only)
- Manual or electric drive
- Self-supporting option available
- Wide range of fabrics
- Construction available in any colour from RAL palette

Properties:

- Extruded aluminium cassette dedicated for wall, niche and facade installation
- Under plaster cassette option available. Equipped with an extension enabling external plaster application
- Extruded aluminium sideguides
- Optional stainless steel cable guides (R120 System only)
- Option to use the "ANTIWIND" bar (R120 System only)
- Special arm working in the angle between 90°-135° (MR120 System only)
- Electric drive with wired or remote control operation
- Self-supporting option available
- Wide range of fabrics
- Construction available in any colour from RAL palette